

## Ceilings & Walls

### Rosette Washers & Screws



For fastening ceiling board. 1" diameter, white. Center hole for 6# screw.

- 260401** Rosette Only; 200/Bag  
**263106** Screw Only; 200/Bag  
**260410** Rosette & Screw; 250/Pk.



### Putty Knife

High impact plastic for fast, easy clean-up. 3.5" long handles and 3.5" long blades. Hang hole for storage or display.

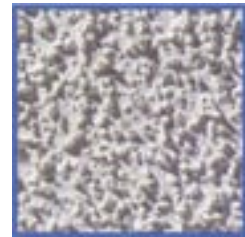
- 381105** 2"  
**381106** 3"  
**381107** 4"



### Easy Touch Acoustic Texture

Patch "popcorn" or "cottage cheese" type ceiling textures fast. Contains actual polystyrene chips to match commercially-applied textures. Patch small areas up to 2 sq. ft. 16 oz.

- 185027** Medium  
**185028** Coarse



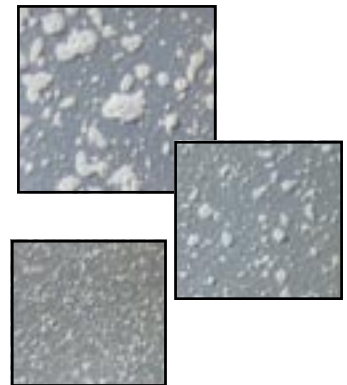
### Easy Touch Knockdown Texture



Water-based; matches knock-down "Mediterranean" and splatter-type wall and ceiling textures. Two different application straws for either a heavy or medium pattern. Patches small areas up to 8 sq. ft. Single 20 oz. can provides up to 16 sq. ft. of coverage.

**185025**

### Easy Touch Spray Texture



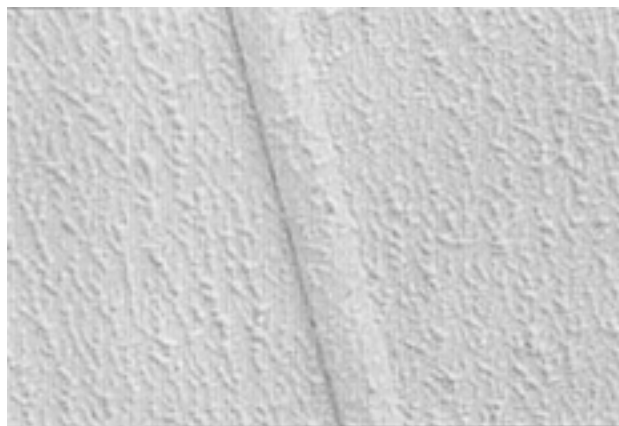
Fast-drying, oil-based. Three color-coded straws let you choose the perfect match for "orange peel" splatter textures. Up to 100 sq. ft. coverage from 20 oz. can.

**185026**

# SeaSpray Brand Hi-Strength MVR Ceiling Panels

Attractive textured ceiling panels and a code-approved moisture/vapor retarder, all in one easy to use product. Manufactured with a high strength gypsum core with increased uniformity and integrity to increase sag resistance. Field tests prove these new 5/16" panels provide superior sag resistance to regular gypsum core, even when installed over framing 24" o.c. using foam adhesive attachment methods.

- Five year limited warranty against visible sag
- Meets HUD standards of 1 perm or less for vapor retarder
- Square edged linear panels are coated with durable latex finish that resists surface marking
- Bolder, heavier texture helps hide joints
- Fire resistant, UL labled; meets HUD safety standards
- Easy to install (and eliminates need for applying other vapor retarders)
- Improved sag resistance
- 24" o.c. foam adhesive attachment
- Built-in vapor barrier
- Hard painted surface
- Easy touch-up



*Pictured with optional decorative battens*

**200005** 4' x 13' 9-1/2" x 5/16"  
**200006** 4' x 13' 8" x 5/16"



*Not Stocked At All Locations*

## Wallboard



Available by custom order only, designed to meet your specific needs. Choose from a variety of substrates and overlays:

**Substrates:**

- Plywood
- Particle Board
- MDF
- OSB
- Lauan
- Gypsum

**Overlays:**

- PVC Vinyls
- Top Coated Papers
- Low Pressure Melamine Saturated
- High Pressure Laminate
- Polyester Film



**200010** Panel

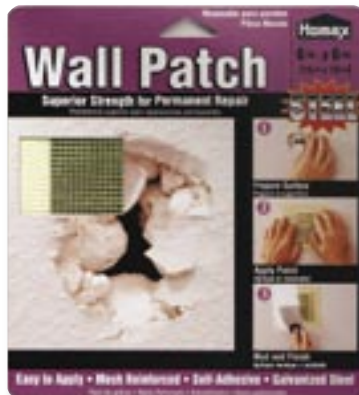
## Easy Touch Acoustic Texture Kit



Kit includes sprayer and acoustic polystyrene chip texture.

**185030** Kit  
**185031** Refill

## Homax Wall & Ceiling Repair Patch



**For drywall, plaster and other flat surfaces.**

Metal patch with self-adhesive mesh backing permanently repairs holes in walls and ceilings. Refinish to create an invisible patch. Ideal for quick repair of interior drywall and plaster surfaces.

**260417** 6" Patch

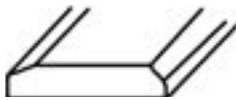
# WOOD & PLASTIC MOLDING & TRIM

Quality, pre-finished wood and plastic trim molding.



## Screen Trim

- 269103** 12' Dark Wood; 84/Pkg.
- 269128** 12' Light Wood; 84/Pkg.
- 269162** 12' White Wood; 84/Pkg.
- 269121** 12' Almond Wood; 84/Pkg.



## Ceiling Beam

- 269106** 13.6' White Painted Wood; 100/Pkg.



## Chair Rail

- 269114** 10' Dark Wood; 50/Pkg.
- 269127** 10' Almond Wood; 50/Pkg.
- 269163** 10' White Paper-Wrapped MDF; 50/Pkg.



## 3/4" Outside Corner

- 269109** 8' Medium Brown Plastic; 150/Pkg.
- 269110** 8' Light Plastic; 150/Pkg.
- 269124** 8' Almond Plastic; 150/Pkg.
- 269166** 8' White Paper-Wrapped Plastic; 150/Pkg.
- 269178** 8' Indian Oak Paper-Wrapped Plastic; 150/Pkg.



## 1" Outside Corner

- 269132** 8' Medium Brown Plastic; 125/Pkg.
- 269131** 8' Almond Plastic; 125/Pkg.
- 269130** 8' Light Plastic; 125/Pkg.
- 269167** 8' White Plastic; 125/Pkg.



## Inside Corner

- 269107** 8' Medium Brown Wood; 160/Pkg.
- 269108** 8' Light Wood; 200/Pkg.
- 269123** 8' Almond Wood; 160/Pkg.
- 269165** 8' White Wood; 160/Pkg.

## 1/4" Shoe Stop



- 269111** 7' Medium Brown Wood; 200/Pkg.
- 269112** 7' Light Wood; 200/Pkg.
- 269125** 7' Almond Wood; 170/Pkg.
- 269168** 7' White Paper-Wrapped MDF; 170/Pkg.
- 269176** 8' Indian Oak Paper-Wrapped MDF; 125/Pkg.

## 3/4" Shoe Stop



- 269115** 7' Light Wood; 125/Pkg.
- 269116** 7' Medium Brown Wood; 125/Pkg.
- 269169** 7' White Paper-Wrapped MDF; 125/Pkg.
- 269180** 7' Indian Oak Paper-Wrapped Luan; 100/Pkg.

**NEW!**



## 3/4" x 8' Batten

- 269104** Medium Brown Wood; 300 Pkg.
- 269105** Light Wood; 300 Pkg.
- 269122** Almond Wood; 300 Pkg.
- 269170** White Paper-Wrapped MDF; 300 Pkg.



## 1.5" x 8' Batten

- 269179** Indian Oak Paper-Wrapped Luan; 175/Pkg.
- 269174** White Paper-Wrapped Luan; 175/Pkg.



## 1" x 8' Batten

- 269117** Medium Brown Wood; 225/Pkg.
- 269118** Light Wood; 225/Pkg.
- 269171** White Paper-Wrapped MDF; 225/Pkg.
- 269177** Indian Oak Paper- Wrapped Luan; 250/Pkg.

## Lip Molding 8'



- 269134** Brown Plastic; 150/Pkg.
- 269136** Almond Plastic; 150/Pkg.
- 269173** White Paper-Wrapped MDF; 150/Pkg.

## Casing



- 269100** 86" Dark Wood; 60/Pkg.
- 269119** 86" Almond Wood; 60/Pkg.
- 269172** 86" White Paper-Wrapped MDF; 60/Pkg.
- 269175** 86" Indian Oak Paperwrapped MDF; 175/Pkg.

## Crown Cove

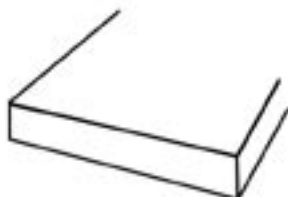


- 269113** 10' Dark Wood; 50/Pkg.
- 269126** 10' Almond Wood; 50/Pkg.
- 269164** 10' White Paper-Wrapped MDF; 50/Pkg.

## Cove Casing



- 269101** 10' Medium Brown Painted Wood; 180/Pkg.
- 269102** 10' Light Wood; 180/Pkg.
- 269120** 7' Almond Wood; 180/Pkg.
- 269160** 10' White Paper-Wrapped MDF; 180/Pkg.
- 269161** 7' White Paper-Wrapped MDF; 180/Pkg.



## Door Jamb

- 269140** 2" x 7' Oak
- 269141** 3.25" x 7' Oak
- 269142** 4.5 x 7' Oak

